



RYC Hollandia

Spring Cup 2023 OK Dinghy, Nations Cup 2023 Solo, and Contender

12-14 May 2023

Medemblik, the Netherlands

SAILING INSTRUCTIONS

The Spring Cup 2023 for the OK Dinghy, Nations Cup 2023 Solo and Contender classes will be held from 12-14 May 2023 inclusive. The event will be sailed on the IJsselmeer off Medemblik, the Netherlands.

The Organizing Authority (OA) is the Royal Yacht Club Hollandia.

[NP] denotes a rule that shall not be grounds for protests by a boat. This changes RRS 60.1(a).

1 RULES

- 1.1 The regatta will be governed by the rules as defined in *The Racing Rules of Sailing* (RRS).
- 1.2 The National Prescriptions of the Royal Netherlands Watersports Association (RNWA) will apply. See <https://www.watersportverbond.nl/media/puwaelijc/rvw-2021-2024-national-prescriptions-ukv3.pdf>
- 1.3 If there is a conflict between languages the English text will take precedence.

2 CHANGES TO SAILING INSTRUCTIONS

Any change to the sailing instructions will be posted before 08:00 on the day it will take effect, except that any change to the schedule of races will be posted by 20:00 on the day before it will take effect.


3 COMMUNICATIONS WITH COMPETITORS

- 3.1 Notices to competitors will be posted on the official Notice Board located near the entrance of the race office and will be uploaded to manage2sail.
- 3.2 The race office is located at the Regatta Center Medemblik.

4 [DP] CODE OF CONDUCT

- 4.1 Competitors and support persons shall comply with any reasonable request from race officials.
- 4.2 Competitors and support persons shall handle any equipment or place advertising provided by the organizing authority with care, seamanship, in accordance with any instructions for its use and without interfering with its functionality.

5 SIGNALS MADE ASHORE

- 5.1 Signals made ashore will be displayed at the main flagpole of the Regatta Center Medemblik near the race office.
- 5.2 **Signal:** Flag "AP"  **Meaning:** When flag AP is displayed ashore, '1 minute' is replaced with 'not less than 60 minutes' in the race signal AP.

6 SCHEDULE OF RACES AND STARTING SEQUENCE

- 6.1 Palaver on Friday will be held at 10:30 hrs. in front of the regatta office.
- 6.2 Initial starting order:

Contender
OK Dinghy
Solo


- 6.3 After the first race of a day, the race committee may change the starting order.
- 6.4 The schedule of races is as follows:

Day/Date	Class	Number of races
Friday 12 May	Contender	3
	OK Dinghy	3
	Solo	3
Saturday 13 May	Contender	3
	OK Dinghy	4
	Solo	4
Sunday 14 May	Contender	3
	OK Dinghy	3
	Solo	3


- 6.5 On Friday the warning signal for the first race will be at 12:00 hrs.
- 6.6 On Saturday and Sunday the warning signal for the first race will be at 10:30 hrs.
- 6.7 To alert boats that a race or sequence of races will begin soon, the orange starting line flag on the race committee signal vessel will be displayed with one sound at least five (5) minutes before a warning signal is made.
- 6.8 On Sunday no warning signal will be made after 14:30 hrs.

7 CLASS FLAGS

The class flag will be:

- Contender: G 

- OK Dinghy: D 

- Solo: E 

8 RACING AREA

8.1 Appendix 1 shows the approximate location of the racing area.

8.2 The starting area is defined as a rectangle covering the area 100 meters to both windward and leeward of the starting line and 50 meters to both port and starboard of either end of the starting line.

9 COURSES

9.1 The diagram in Appendix 2 shows the courses, including the approximate angles between legs, the order in which marks are to be passed, and the side on which each mark is to be left.

9.2 No later than the warning signal, the approximate compass bearing of the first leg will be displayed on the race committee signal vessel.

10 MARKS

10.1 The color and shape of the marks 1, 2, and 3 will be described in Appendix 2.

10.2 A race committee vessel signaling a change of a leg of the course is a mark as provided in SI 13.2.

10.3 The starting marks will be a race committee vessel at the starboard and a dan buoy at the port end.

10.4 The finishing marks will be a race committee vessel at the starboard end and a dan buoy at the port end.

11 OBSTRUCTIONS

There are no areas designated as obstructions.

12 THE START

12.1 Races will be started by using RRS 26 with the warning signal made five (5) minutes before the starting signal. There will be no intervals between the starts.

12.2 The starting line will be between staffs displaying an orange flag on the starting marks.

12.3 A mark ILM (dan buoy displaying a red flag) may be used. If a mark ILM is used, the following will apply: boats shall keep the mark ILM to starboard while starting. Mark ILM is also a mark of the starting line as meant in RRS part 2, section C, the introduction.

- 12.5 Boats whose warning signal has not been made shall avoid the starting area during the starting sequence for other classes. **[NP][DP]**
- 12.6 A boat that does not start within four (4) minutes after her starting signal will be scored Did Not Start (DNS) without a hearing. This changes RRS A5.1 and A5.
- 12.7 If a start under RRS 30.4 results in a General Recall, sail numbers of the boats identified breaking the black flag rule will be displayed on the race committee signal vessel at starboard end or – at the discretion of the race committee - a committee vessel near the starting vessel.

13 CHANGE OF THE NEXT LEG OF THE COURSE

- 13.1 To change the next leg of the course, the race committee will move the original mark (or the finishing line) to a new position.
- 13.2 Except at a gate, boats shall pass between the race committee vessel signaling the change of the next leg and the nearby mark, leaving the mark to port and the race committee vessel to starboard. This changes RRS 28.

14 THE FINISH

The finishing line will be between staffs displaying a blue flag on the finishing marks.

15 TIME LIMITS AND TARGET TIMES

- 15.1 Time limits and target times for all classes are as follows:

Time Limit	90 minutes
Mark 1 time limit	30 minutes
Target time	45 minutes
Finishing window	15 minutes

- 15.2 If no boat has passed mark 1 within the Mark 1 time limit the race will be abandoned.
- 15.3 The Finishing Window is the time for boats to finish after the first boat of their class sails the course and finishes. Boats failing to finish within the Finishing Window, and not subsequently retiring, penalized or given redress, will be scored Time Limit Expired (TLE) without a hearing. A boat scored TLE shall be scored points for the finishing place one more than the points scored by the last boat that finished within the Finishing Window. This changes RRS 35, A5.1, A5.2 and A10.
- 15.4 Failure to meet the target time will not be grounds for redress. This changes RRS 62.1(a).

16 HEARING REQUESTS

- 16.1 For each class, the protest time limit is 90 minutes after the last boat [in that class] finishes the last race of the day or the race committee signals no more racing today, whichever is later. This time limit will be posted on the official notice board.
- 16.2 Hearing request forms are available from the race office.
- 16.3 Notices will be posted no later than 30 minutes after the protest time limit to inform competitors of hearings in which they are parties or named as witnesses. Hearings will be held in the protest room, located at the race office, as soon as possible after receipt of the hearing request form.

17 NP][DP] SAFETY REGULATIONS

- 17.1 RRS 40 shall apply at all times while afloat. Flag Y will not be displayed. This changes RRS 40 and the Preamble of Part 4.
- 17.2 Any boat that retires from a race, or does not start a race shall inform the race committee on the water if possible and shall in all cases inform the race office as soon as possible.
- 17.3 Competitors who require assistance should so signify by blowing a whistle or waving one arm. The race committee reserves the right to assist competitors who, in the opinion of the race committee, require assistance, regardless of the wishes of the competitor.

18 REPLACEMENT OF CREW OR EQUIPMENT

- 18.1 **[NP][DP]** Substitution of competitors will not be allowed without prior written approval of the race committee.
- 18.1 **[DP]** In the event of damage, boats and equipment may only be substituted with the written permission of the race committee. If the damage occurs later than 90 minutes before the first scheduled start on a racing day and before the start of the last race of the day, provisional verbal permission shall be obtained from the race committee and the written permission shall be applied for before the end of the protest time limit at the end of the day in which the substitution takes place.

19 EQUIPMENT CHECKS AND MEASUREMENT CHECKS

- 19.1 The race committee may permit under exceptional circumstances and only upon a written request, a boat to use a sail number other than required by RRS 77 and RRS G.
- 19.2 All competitors, shall use only one hull, (set of) sail(s), mast, boom, centerboard, rudder, which may be identified during measurement.
- 19.3 A boat or equipment may be inspected at any time for compliance with the class rules, notice of race and sailing instructions.
- 19.4 **[DP]** When instructed by a race official on the water, a boat shall proceed to a designated area for inspection.

20 [NP][DP] HARBOR MASTERS

The instructions of the harbor masters shall be followed strictly.

21 OFFICIAL VESSELS

Official boats will be marked as follows:

- a) Rescue vessels will fly a flag marked "RESCUE".

22 [DP] SUPPORT TEAMS

- 22.1 During the races there shall be no communication between competitors and support persons.
- 22.2 After the first warning signal team support and private boats shall stay well clear of the starting, racing and finishing area until the last boat has finished.
- 22.3 Team leaders, coaches and other support persons shall stay outside areas where boats are racing from the time of their preparatory signal for the first start until all boats have finished or retired or the race committee signals a postponement, general recall or abandonment.
- 22.4.1 Team support and private vessels shall stay at least 100 m away from any boat racing.

23 TRASH DISPOSAL

Trash may be placed aboard official or support person vessels.

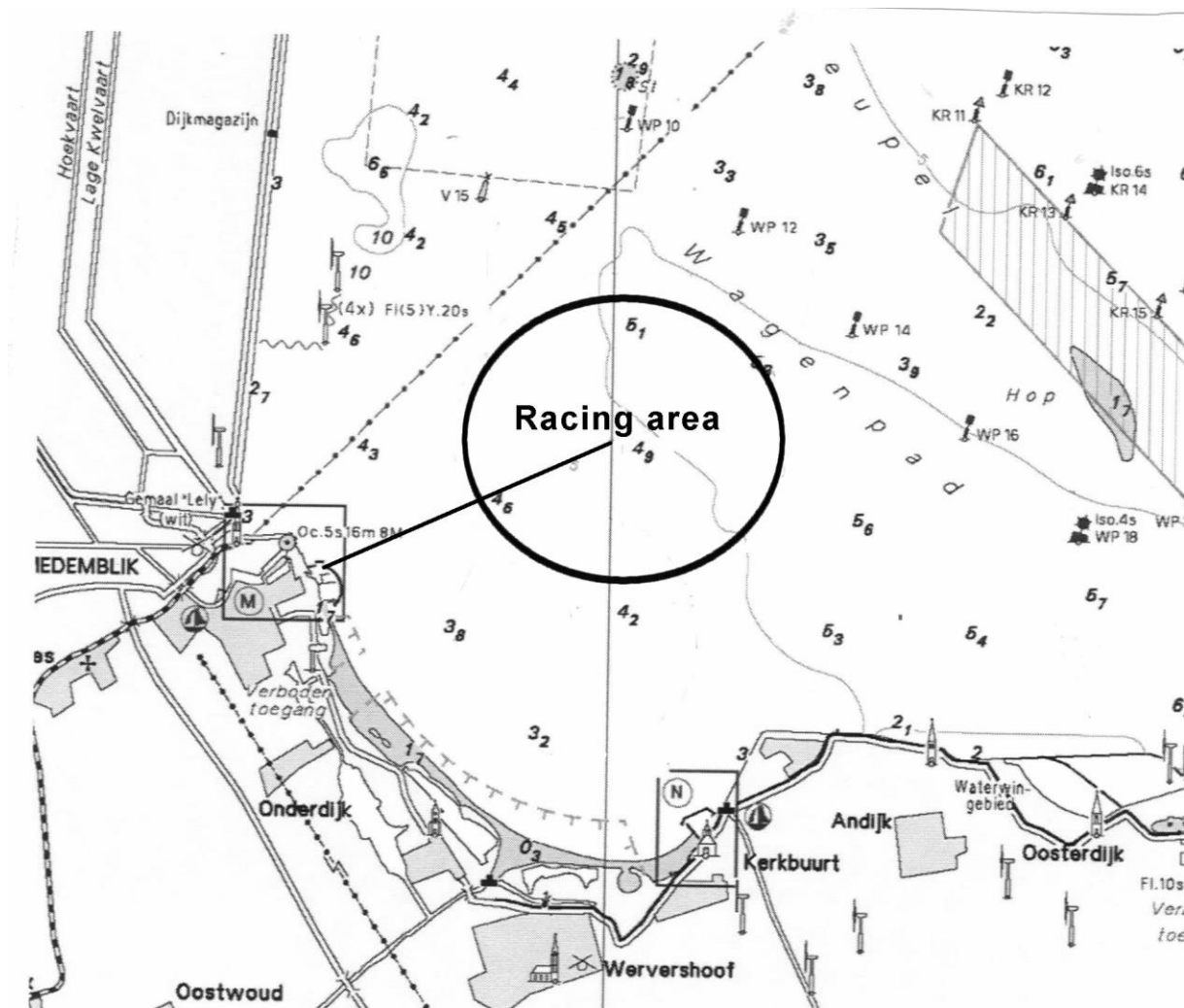
23 ORGANIZATION

Race officers: Marcel Hanenberg and Divera Pronk

Chairman of the jury: t.b.a.

Appendix 1 the location of racing areas

Approximate position of the center of the course area, from the harbor entrance
Harbour (Regatta Center) – Racing Area (midpoint)
Distance: approx. 1,6 NM
Compass bearing: approx. 70°





Appendix 2 The Course and marks

Course diagram – Course Area

<i>Classes</i>	<i>Course Area</i>	<i>Sequence of marks</i>
All classes		Start – 1 – 2 – 3 – 1 – 3 – Finish

